



Tollway Chloride Reduction & Offset Program

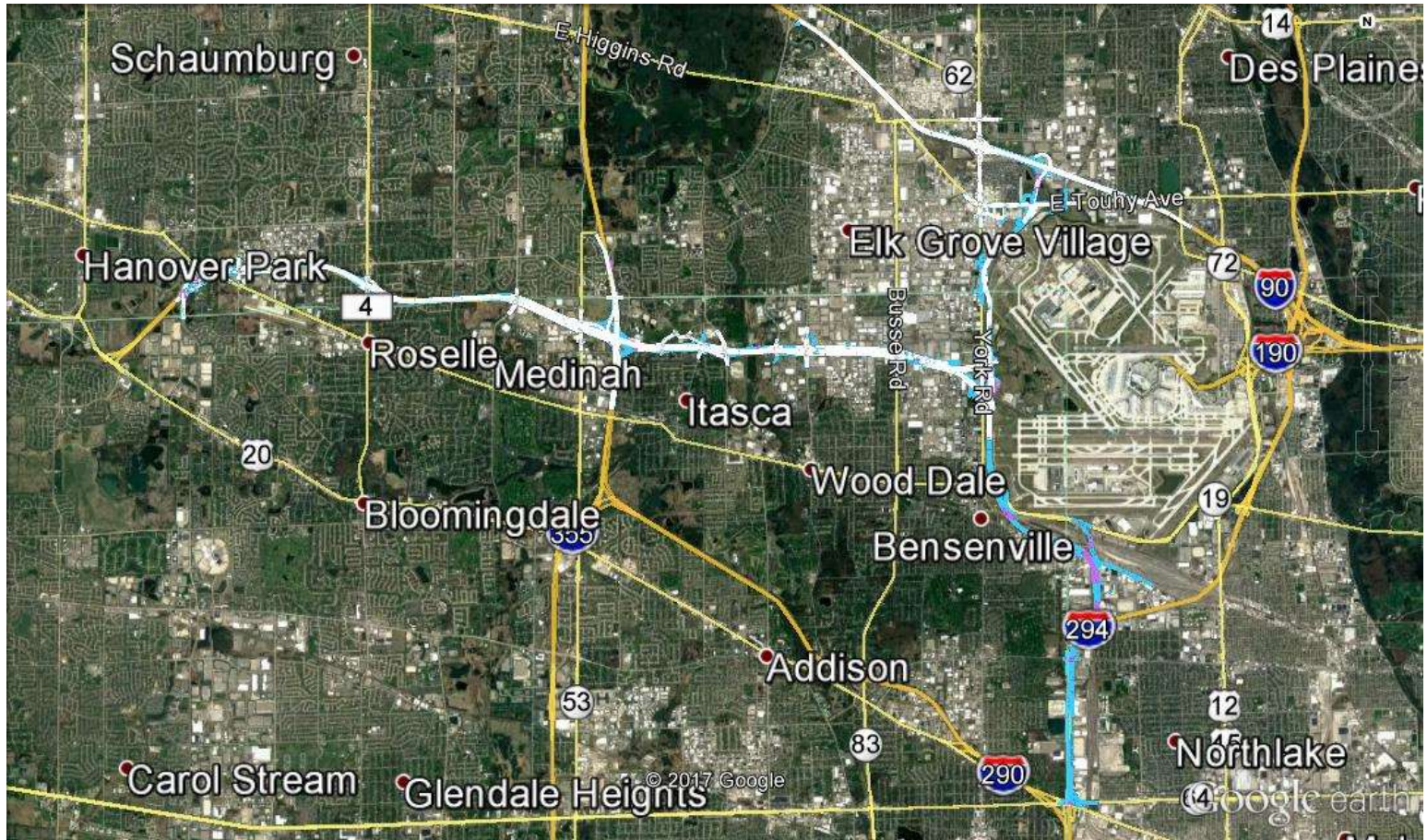
Bryan Wagner
Environmental Policy and Program Manager
Illinois Tollway
October 12, 2017

Agenda

- **Elgin O'Hare Western Access**
 - **Overview**
 - **Permitting**
- **Chloride Reduction & Offset Program**
 - **Tollway efforts**
 - **Offset needs**
- **Offset Program Status**
 - **Current partnerships**
 - **Intergovernmental Agreement (IGA) framework**



Elgin O'Hare Western Access (EOWA)



Problem Analysis

Salt application summary for EOWA Project Limits

Estimated Annual Salt Application Totals

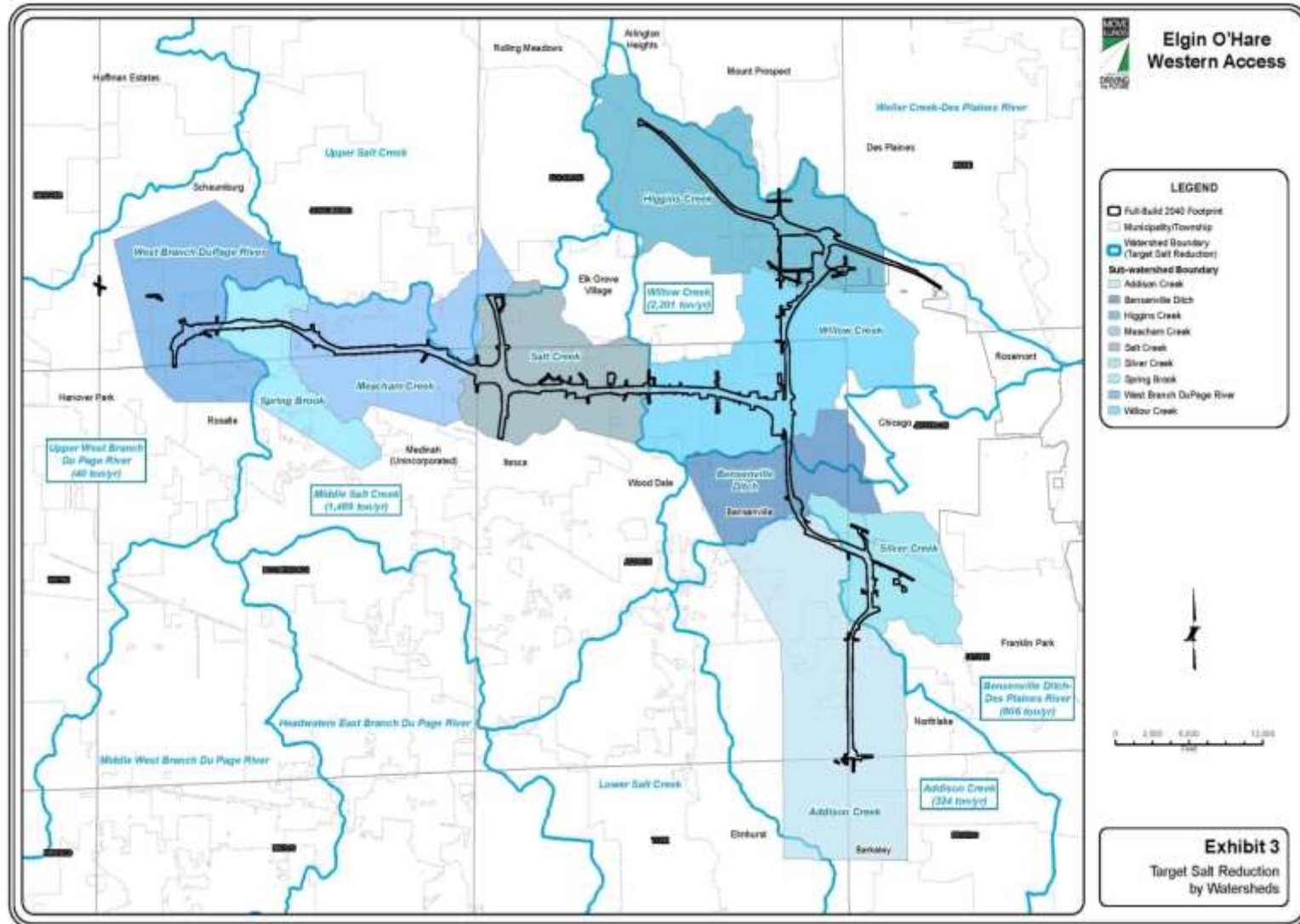
Project Stage	Lane miles ^a	Salt Applied, ton/yr ^b	Increase from Existing Condition Ton/yr
Existing (Baseline) Condition	159	3,959	N/A
Initial Construction Phase (ICP) DRSCW Watersheds	264	7,847	3,888
			1,482

- Lane miles include arterial/collector and freeway lane miles located within the project limits
- ^a Considers two different salt application rates depending on the roadway class.
- ^b Arterial/collector roads are loaded at 14 ton/lane mile/year. Freeways are loaded at 39.7 ton/lane mile/year.

Presented by Bryan Wagner on October 12, 2017



Offset Needs



Offset Program Status

➤ Current partnerships/IGAs

- Wood Dale
- Bensenville

➤ IGA framework

- Conduct baseline assessment
- Establish reduction goal and supporting equipment needs
- Minimum 5 year reporting
- Cost share



THANK YOU